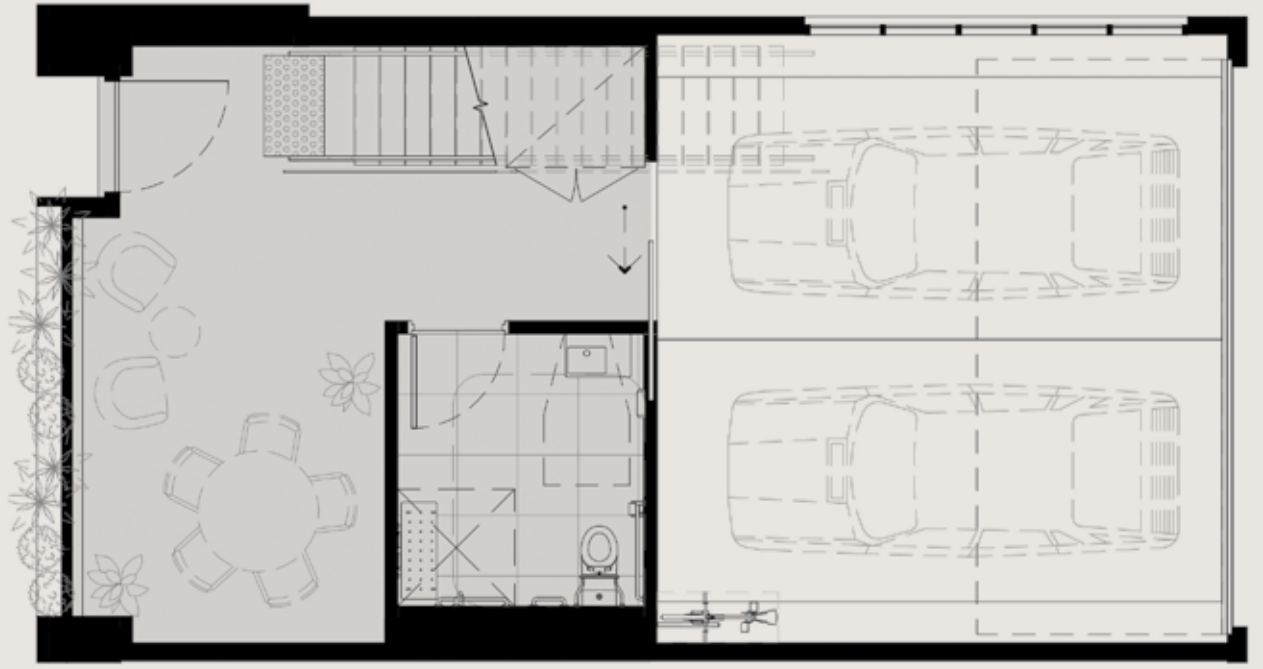
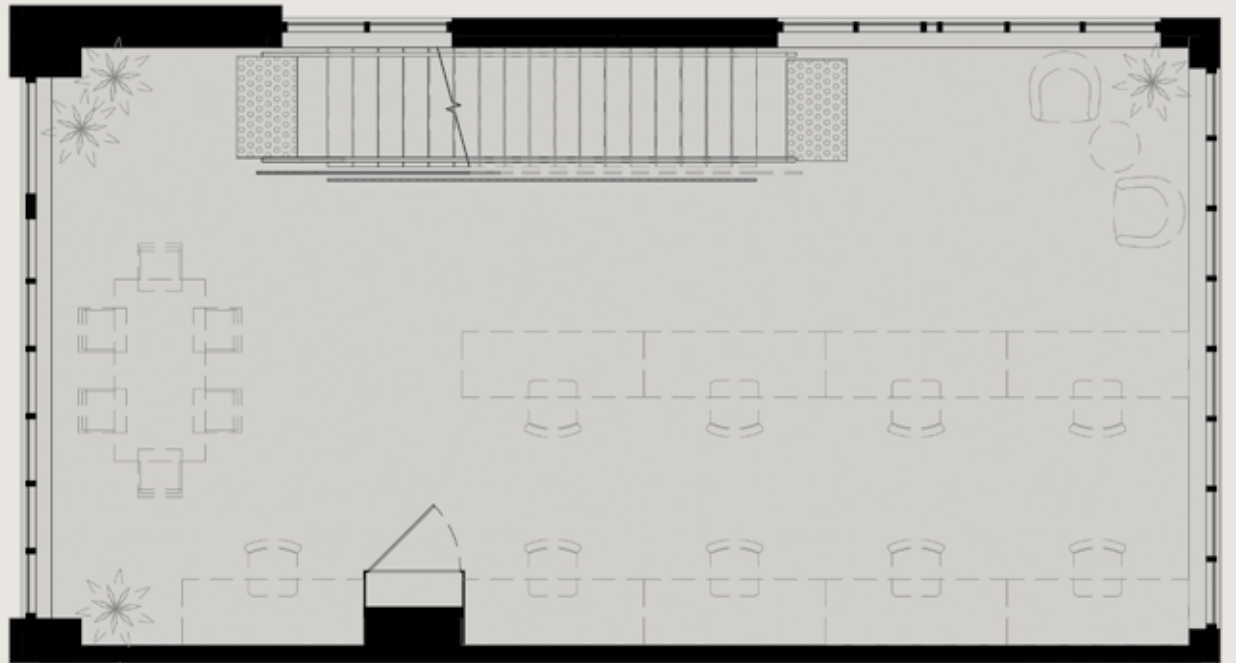


WAREHOUSE-STYLE OFFICES
45 Vere Street, Richmond

G



1



2



5/45

Building 5 is spread across three spacious levels, all with abundant natural light throughout. While the industrial-style framed windows provide a distinctive warehouse-feel commonly associated with historical, gritty Richmond, this building is brand new. The office boasts a west-facing balcony on Level Two, ideal for afternoon drinks and informal meetings. The building also features a private double-lockable garage for added convenience.

(3x levels, 2x car spaces in lockable garage)

