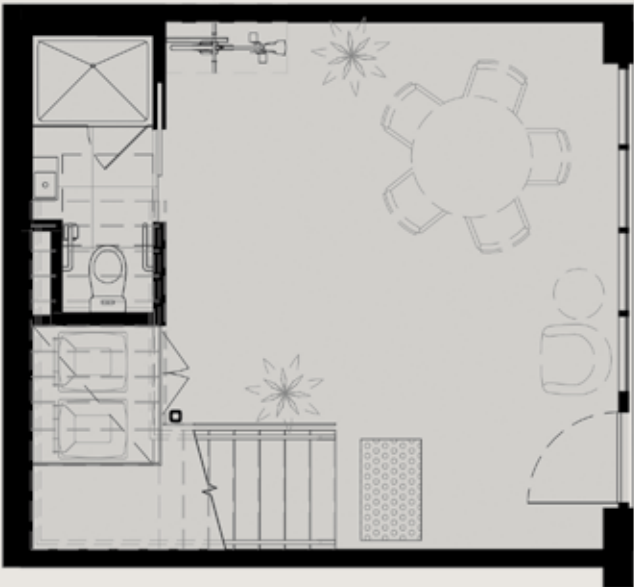
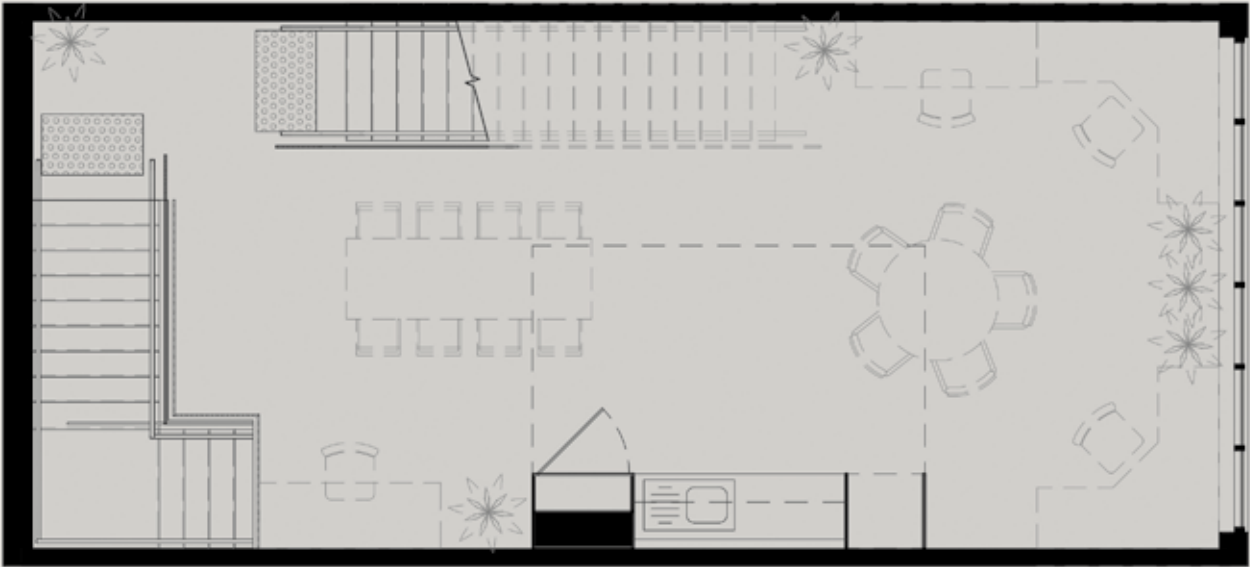


WAREHOUSE-STYLE OFFICES
45 Vere Street, Richmond

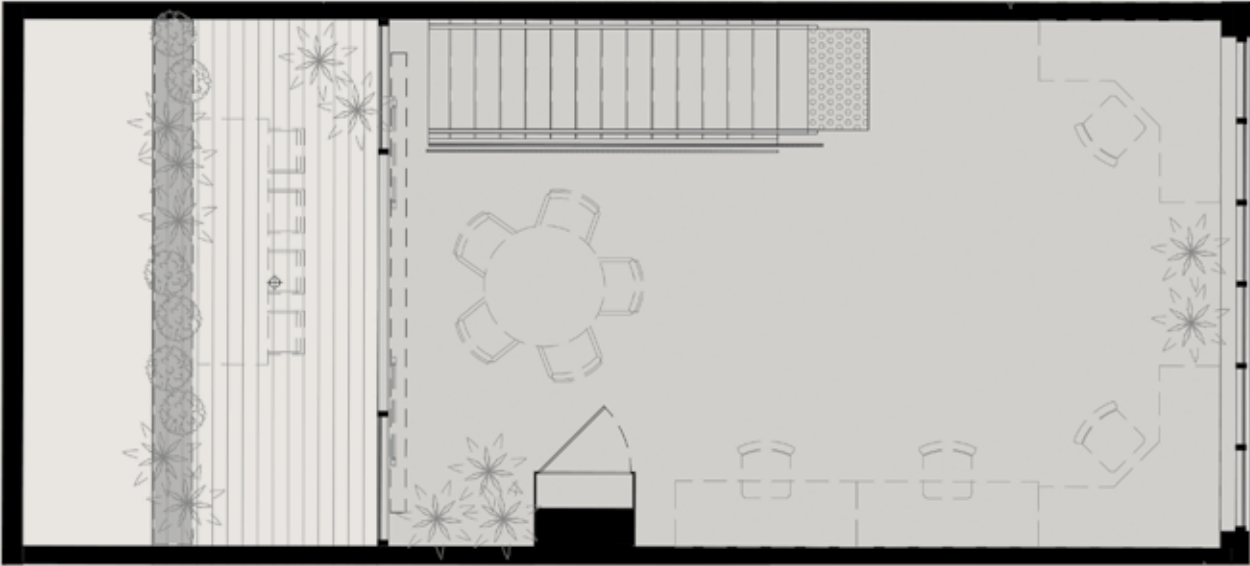
G



1

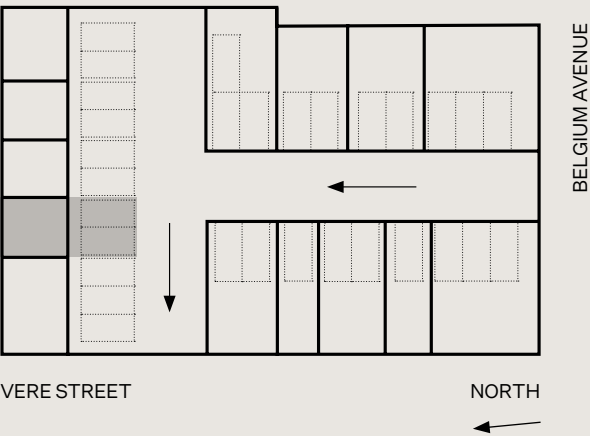


2



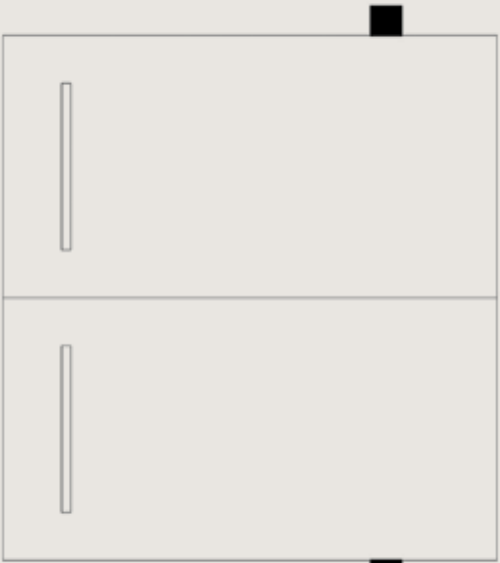
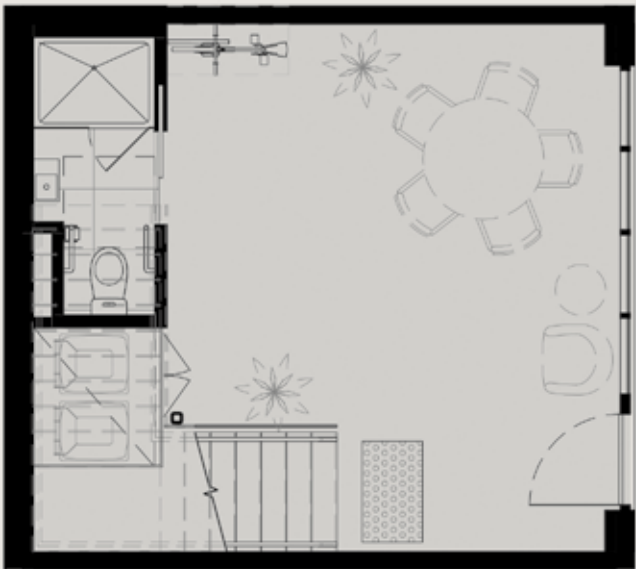
Building 7 is located at the northern-end of the complex. Set over three levels, this circa 150m² space is the ideal launch pad for a small-business owner looking for a statement office to own. It boasts a north-facing deck on Level Two, ideal for lunches and informal meetings. While the industrial-style framed windows provide a distinctive warehouse-feel commonly associated with historical, gritty Richmond, this building is brand new. Undercover double-carpark within the security perimeter provides added convenience.

(3x levels, 2x car spaces)

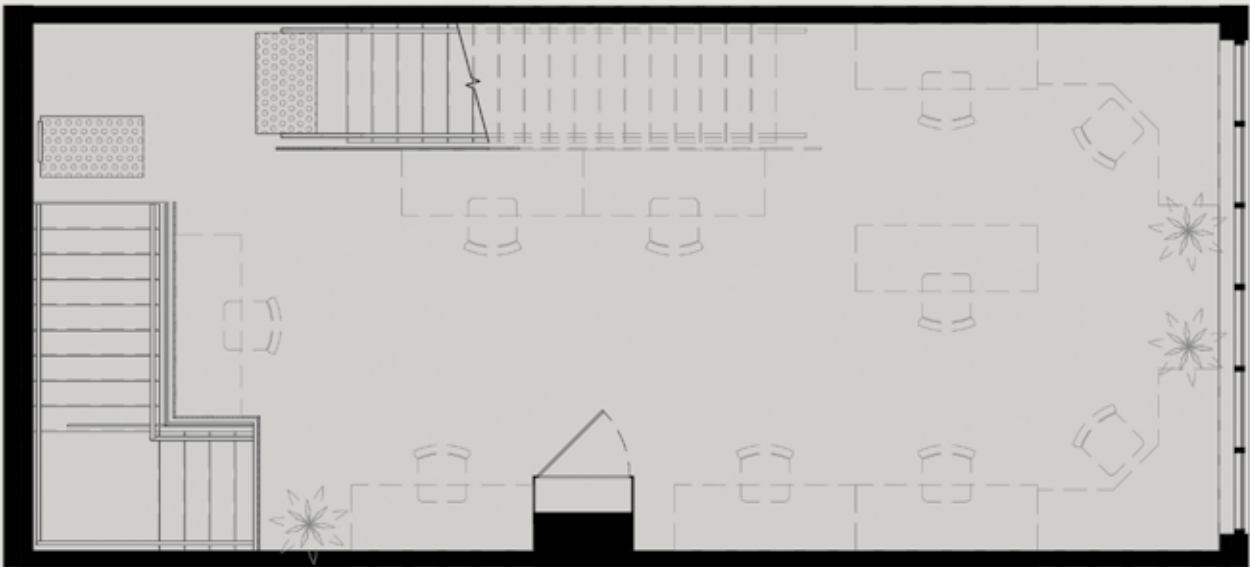


WAREHOUSE-STYLE OFFICES
45 Vere Street, Richmond

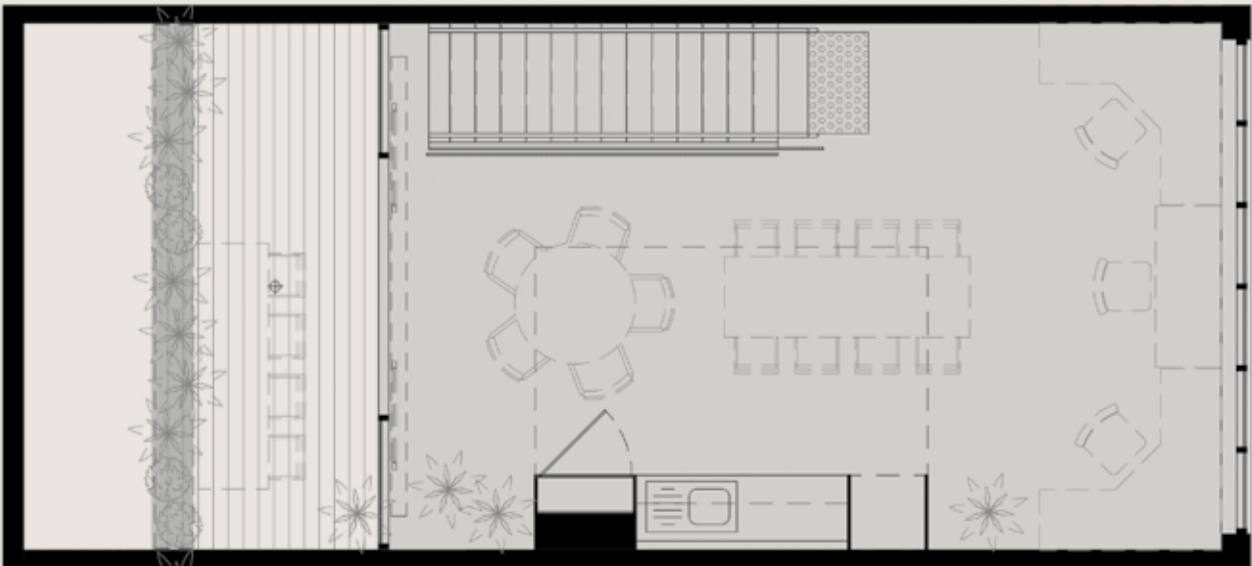
G



1

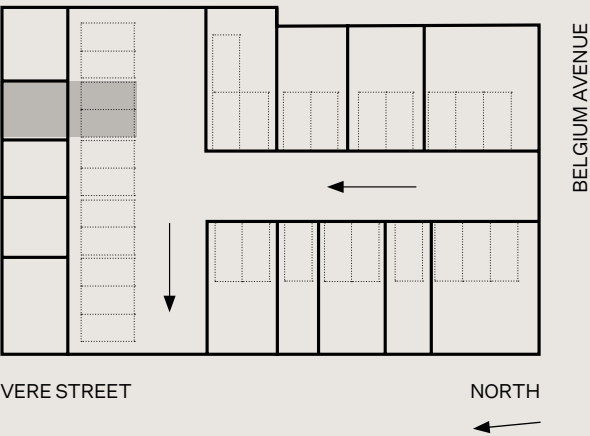


2



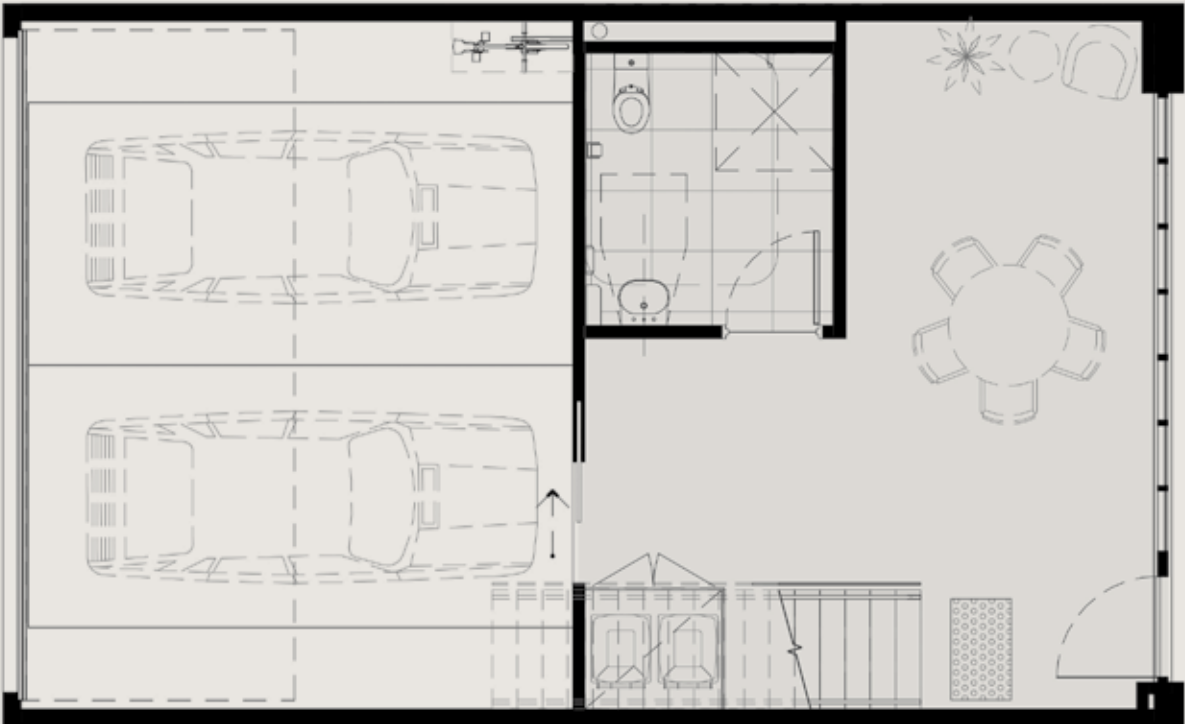
Building 9 is located at the northern-end of the complex. Set over three levels, this circa 150m² space is the ideal launch pad for a small-business owner looking for a statement office to own. It boasts a north-facing deck on Level Two, ideal for lunches and informal meetings. While the industrial-style framed windows provide a distinctive warehouse-feel commonly associated with historical, gritty Richmond, this building is brand new. Undercover double-carpark within the security perimeter provides added convenience.

(3x levels, 2x car spaces)

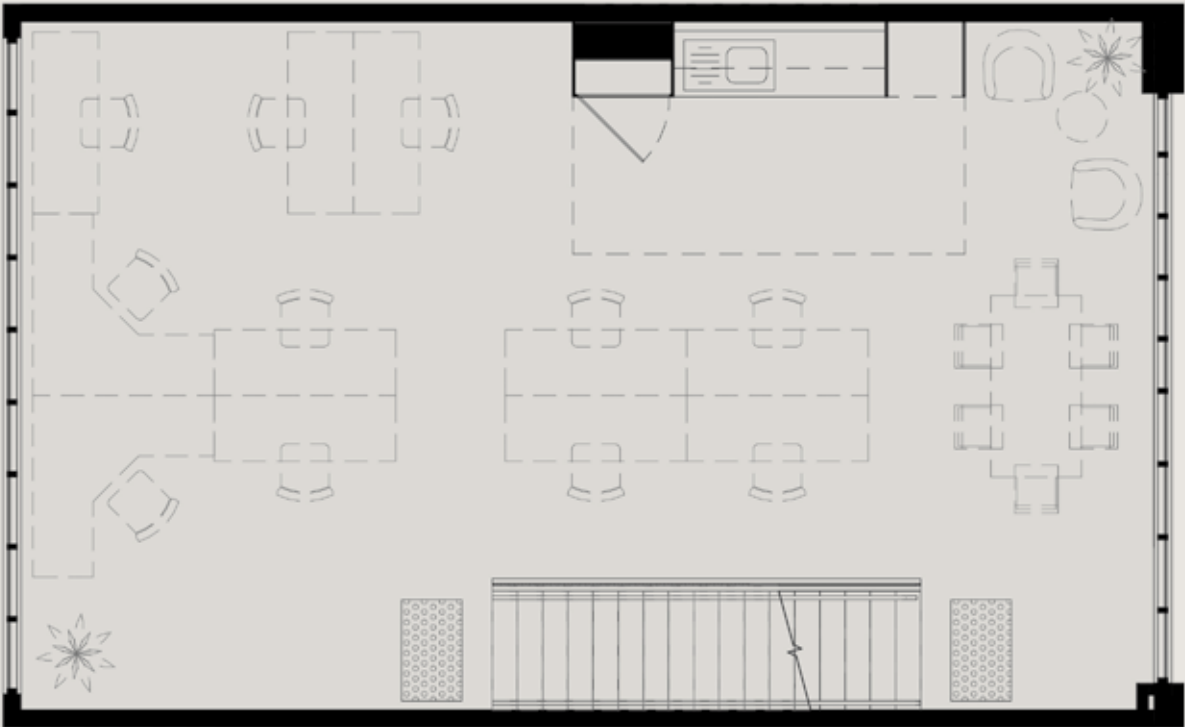


WAREHOUSE-STYLE OFFICES
45 Vere Street, Richmond

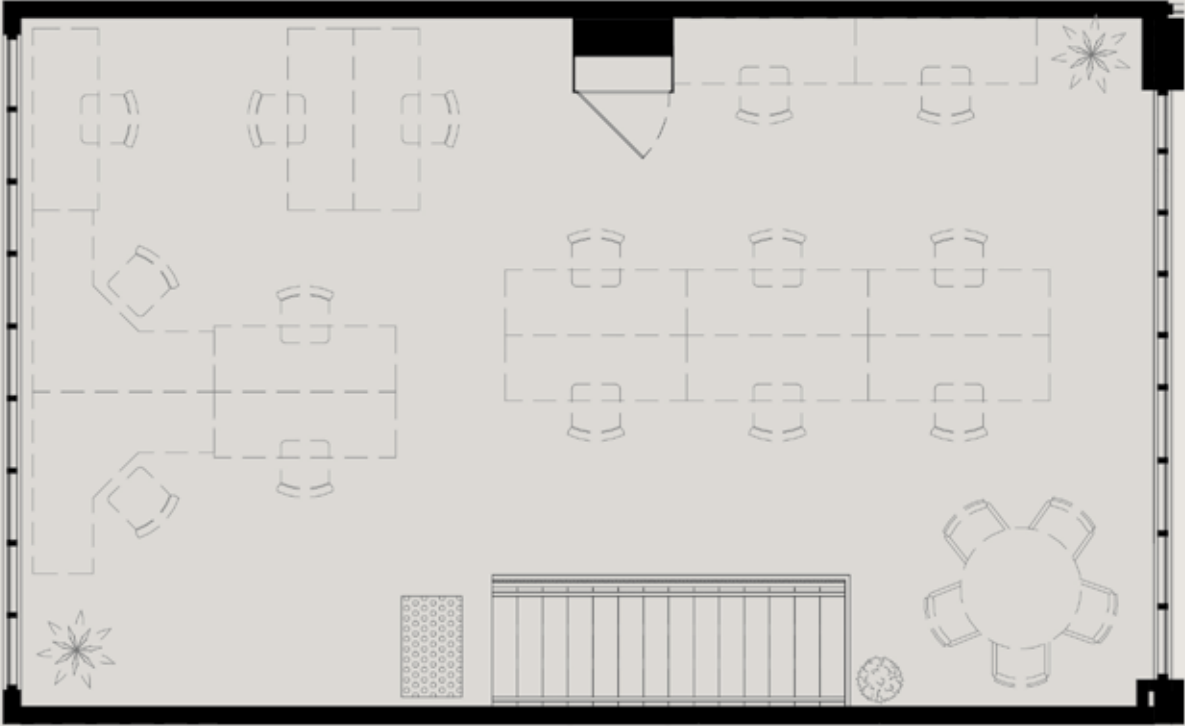
G



1

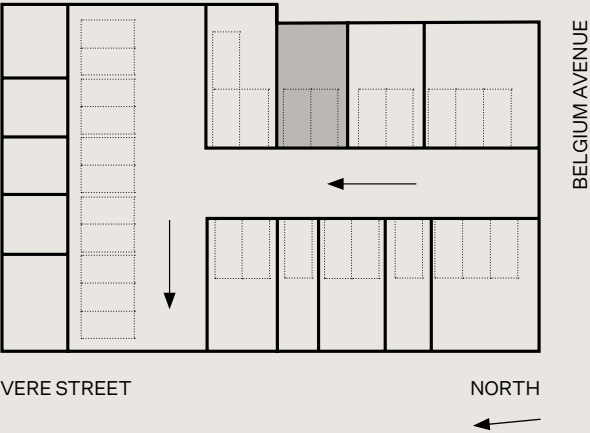


2

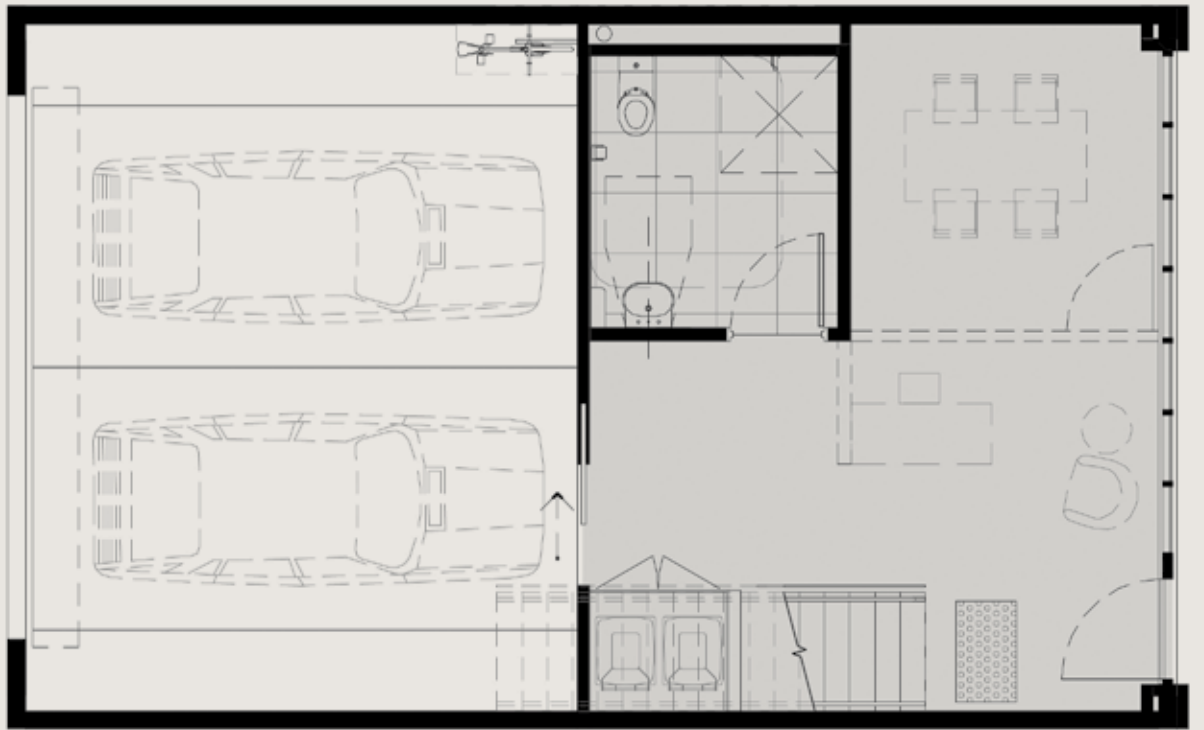


Building 12 spans across three spacious levels and with floor to ceiling windows facing both east and west, allowing for abundant natural light. While the industrial-style framed windows provide a distinctive warehouse-feel commonly associated with historical, gritty Richmond, this building is brand new. The building also features a double-lockable garage, providing added convenience.

(3x levels, 2x car spaces in lockable garage)

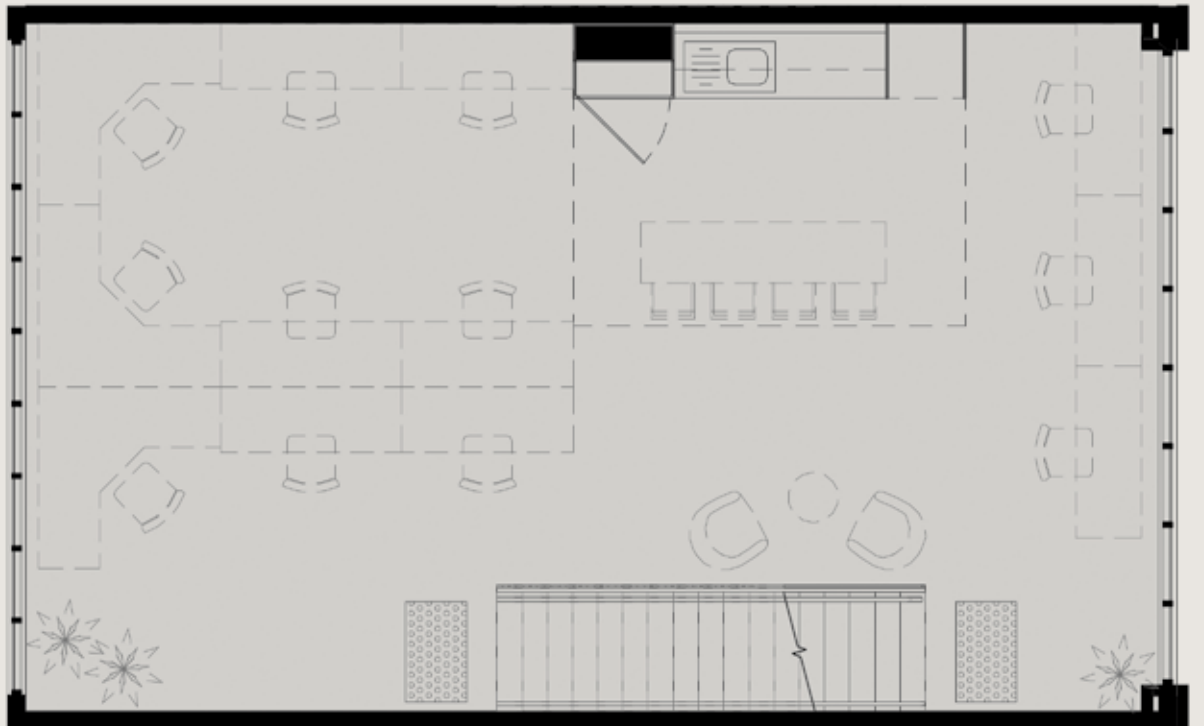


G

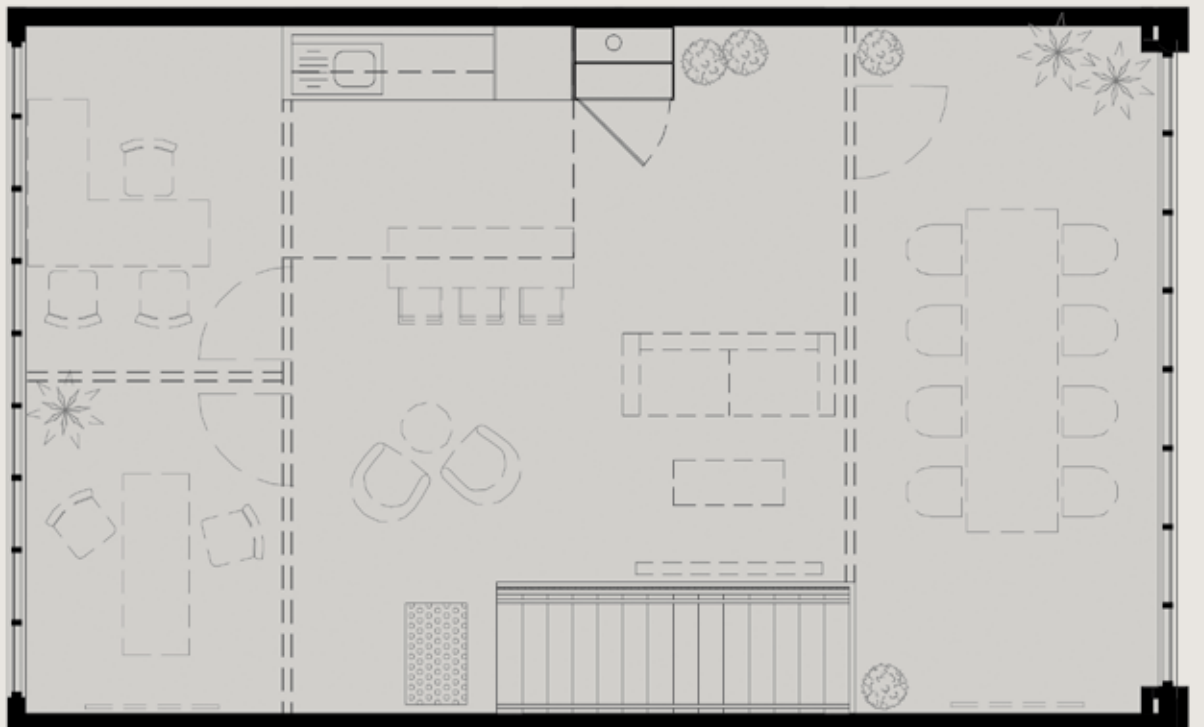


WAREHOUSE-STYLE OFFICES
45 Vere Street, Richmond

1



2



Building 13 spans across three spacious levels with large windows facing both east and west, allowing for abundant natural light. While the industrial-style framed windows provide a distinctive warehouse-feel commonly associated with historical, gritty Richmond, this building is brand new. The building also features a double-lockable garage, providing added convenience.

(3x levels, 2x car spaces in lockable garage)

