

All contractors are to check and verify all dimensions and levels on site prior to any commencement of works. These drawings shall be read in conjunction with engineering specifications which shall take precedence.

This document/drawing is protected by federal copyright law. Copying in any shape or form, whole or part without the written authorisation of Love and Associates or author referred to is strictly prohibited. Civil proceedings claiming damages or other remedies may be brought against persons found copying this document.

Project Address

465 BURWOOD HIGHWAY, VERMONT SOUTH, 3133

No.	Description	Date
A	AmendmentS as per planning permit (shown clouded). Added cabinetry details. Added floor covering drg	10/11/15
B	Amended drgs A002, A300, A700, A702	19/11/15
F	Amendments as per building surveyour.	19/01/16
H	Revisions per building surveyour	08/02/16
I	Updated details for W7, added dims for rear verandah & W10	09/02/16
J	Drgs amended where shown	17/02/16
K	Various revisions per client list	02/03/16

D. Tay
**PROPOSED
ALERTATION TO CHILD
CARE CENTRE**

Floor Plan - Proposed

Project number **F14148**

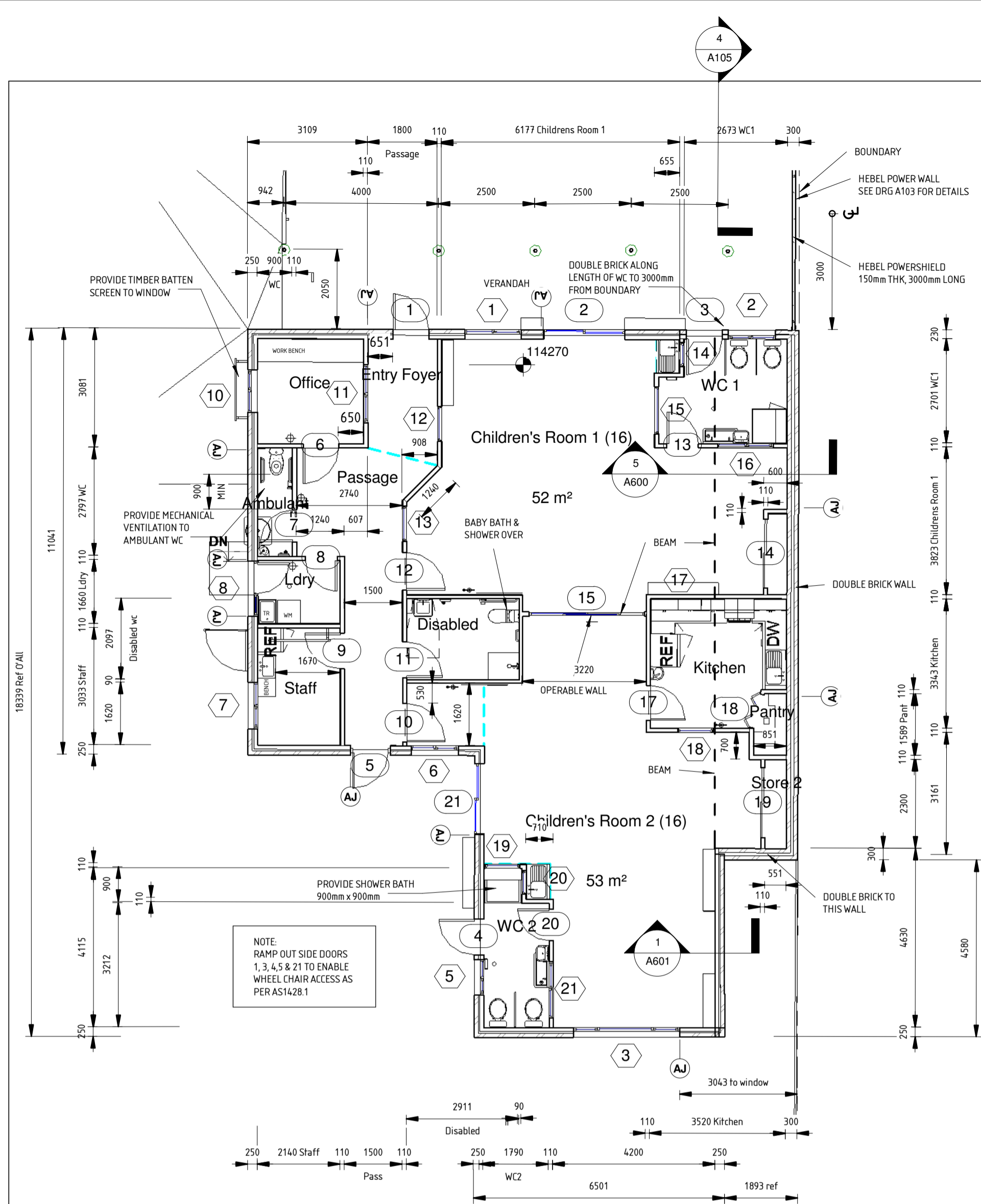
Date **Aug 2015**

Drawn by **HAV**

Checked by **LL**

A300

Sheet size A1 Scale **As indicated**



1 Proposed Floor Plan
1 : 100

Mark	Height	Width	Thick	Finish	Comments	Frame Material
1	2032	920	51	Painted	U=4.4, SHGC=0.59	Timber
2	2040	2100	51	Painted	U=4.4, SHGC=0.59	Aluminium
3	2032	920	51	Painted	U=4.4, SHGC=0.59	Aluminium
4	2032	920	51	Painted	U=2.1, SHGC=0.59	Aluminium
5	2040	920	51	Painted	U=4.4, SHGC=0.59	Aluminium
6	2032	920	51	Painted		Timber
7	2032	820	51	Painted	IN USE INDICATOR	Timber
8	2032	820	51	Painted		Timber
9	2032	920	51	Painted		Timber
10	2040	995	40	Painted		Aluminium
11	2032	920	51	Painted	IN USE INDICATOR	Timber
12	2040	995	40	Painted		Aluminium
13	2032	820	51	Painted	Swing gate	Timber
14	2100	1800	40	Painted		Timber
15	2100	2000	40	Painted		Timber
17	2083	895	40	Painted	Operable wall	Aluminium
18	2000	900	40	Painted		Timber
19	2100	1800	40	Painted		Timber
20	2032	820	51	Painted	Swing gate	Timber
21	2040	1800	51	Painted	U=2.1, SHGC=0.38	Aluminium
22	2040	820	40	Painted		Aluminium

Name	Area	Light 10% min M	Vent. 5% min M
Staff	6 m²	1.26	0.62
Office	7 m²	2.48	1.24
Kitchen	11 m²	-	-
Children's Room 2 (16)	53 m²	11.45	4.27
Disabled	6 m²	-	-
WC 2	6 m²	4.05	2.95
Children's Room 1 (16)	52 m²	6.64	3.32
WC 1	8 m²	2.91	2.28
Pantry	1 m²	-	-
Store 2	1 m²	-	-
Store 1	1 m²	-	-
Ambulant	3 m²	0.94	0.47
Ldry	4 m²	2.132	2.132
Passage	15 m²	-	-
Entry Foyer	5 m²	-	-

NOTE:
WINDOWS TO HAVE FLY SCREENS FITTED
ALL GLAZED DOORS TO HAVE 75mm SOLID DECALS BETWEEN 900-1000mm ABOVE FFL
ALL DOORS TO HAVE LEVER TYPE HANDLES LOCATED BETWEEN 900-1100 ABOVE FFL (SEE AMBULANT & DISABLED WC DETAILS FOR DOOR HARDWARE HEIGHTS)
DOORS 2,4,10,12,6,8,9,14,17,19,22 TO HAVE LEVER TYPE HANDLES LOCATED 1500mm ABOVE FFL DOOR 2,4,10,12,17 (KITCHEN) TO BE SELF CLOSING
SLIDING DOOR 2, TO ACHIEVE MIN 50mm CLEAR THROUGH OPENABLE LEAF SLIDING DOOR TRACK IS TO BE FLUSH WITH FFL, NOGGING BETWEEN FLOOR JOIST
ALL EXTERNAL DOORS TO HAVE SEALS & WEATHER STRIPS AND BE SELF CLOSING
GLAZING TO COMPLY WITH AS1288-2006 & AS2047-2014
CHILDREN'S ROOM AREA IS EXCLUSIVE OF SINK ENTRY DOOR, SHELVING (SHELVING IS MIN 1500 ABOVE FFL) 75mm SOLID DECALS BETWEEN 900-1000mm ABOVE FFL TO ALL GLAZED DOORS
ALL DOORS HAVING AN EXIT SIGN OVER SHALL HAVE A BRAILLE TACTILE SIGN ATTACHED STATING 'EXIT' & 'LEVEL'
INTERNAL DOORS INTO CHILDREN'S WC TO BE SWING GATE

Mark	Window Style	Width	Height	Material	Remarks	Comments
1	Slider	1450	1540	Painted	Aluminium	U=4.7, SHGC=0.58
2	Slider	1210	1030	Painted	Aluminium	U=4.7, SHGC=0.58
3	Slider	2770	2100	Painted	Aluminium	U=3.3, SHGC=0.61
5	Slider	910	1030	Painted	Aluminium	U=2.1, SHGC=0.38
6	Slider	1220	1500	Painted	Aluminium	U=3.3, SHGC=0.61
7	Slider	1210	1030	Painted	Aluminium	U=2.1, SHGC=0.38
8	Awning	1450	2100	Painted	Aluminium	U=2.1, SHGC=0.38
10	Slider	1100	300	Painted	Aluminium	U=2.1, SHGC=0.38
11	Slider	1500	1200	Painted	Aluminium	
12	Fixed	910	1100	Painted	Aluminium	Toughened safety glass
13	Fixed	910	1100	Painted	Aluminium	Toughened safety glass
14	Fixed	610	1040	Painted	Aluminium	Toughened safety glass
15	Fixed	1220	1100	Painted	Aluminium	Toughened safety glass
16	Slider	1450	1030	Painted	Aluminium	Toughened safety glass
17	Fixed	1030	500	Painted	Aluminium	Toughened safety glass
18	Fixed	910	1100	Painted	Aluminium	Toughened safety glass
19	Fixed	910	1100	Painted	Aluminium	Toughened safety glass
20	Fixed	610	1040	Painted	Aluminium	Toughened safety glass
21	Slider	1450	1030	Painted	Aluminium	Toughened safety glass

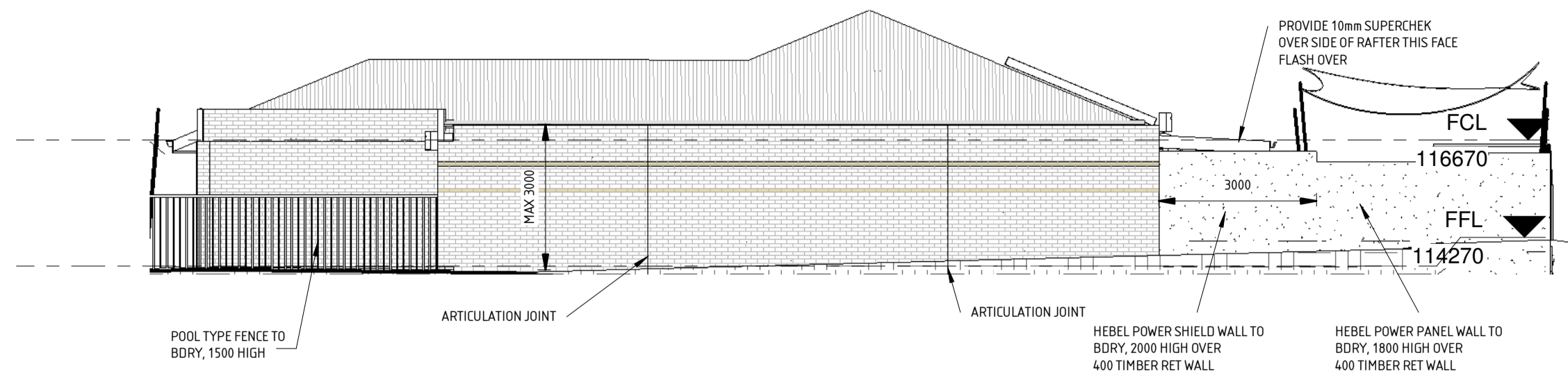
U Value	SHGC	DESCRIPTION
4.7	0.58	3mm Cr
3.3	0.61	3mm Cr/6mm Air Gap/3mm Cr
4.4	0.59	4mm Energy Advantage
4.4	0.59	4mm Energy Advantage

ENERGY DETAILS:

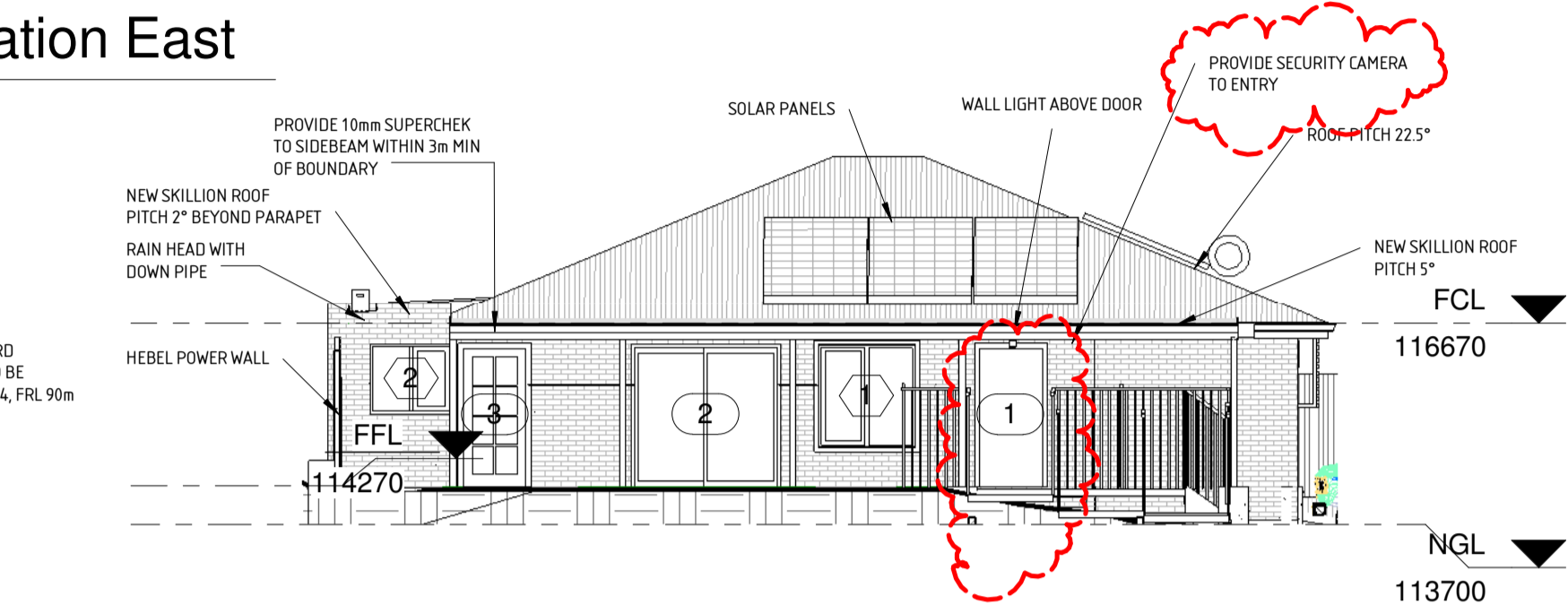
- Region 6 - External Wall Req R2.8
- cavity Brick - 40mm Kooltherm K8 (R value 1.9)
- R3.3 in, R1.3.2 out
- Br wall - use 30 thick Kooltherm K12 framing board (R1.4)
- R3.1 in, R1.3.2 out
- Roof Req R3.2 Down
- Typ pitch steel Roof pitch 22.5°
- R0.39 up, R0.54 down
Req R3.0 min insulation to ceiling
- Typ Flat Roof pitch 3°
- R0.36 up, R0.46 down
Req R3.0 min insulation to ceiling
- Req R2.0 min insulation to sub floor
- All external doors & windows to be sealed from draughts
- All exhaust fans to be fitted with self closing dampers

Name	Area
Staff	6 m²
Office	7 m²
Kitchen	11 m²
Children's Room 2 (16)	53 m²
Disabled	6 m²
WC 2	6 m²
Children's Room 1 (16)	52 m²
WC 1	8 m²
Pantry	1 m²
Store 2	1 m²
Store 1	1 m²
Ambulant	3 m²
Ldry	4 m²
Passage	15 m²
Entry Foyer	5 m²
Net Floor Area:	178M²

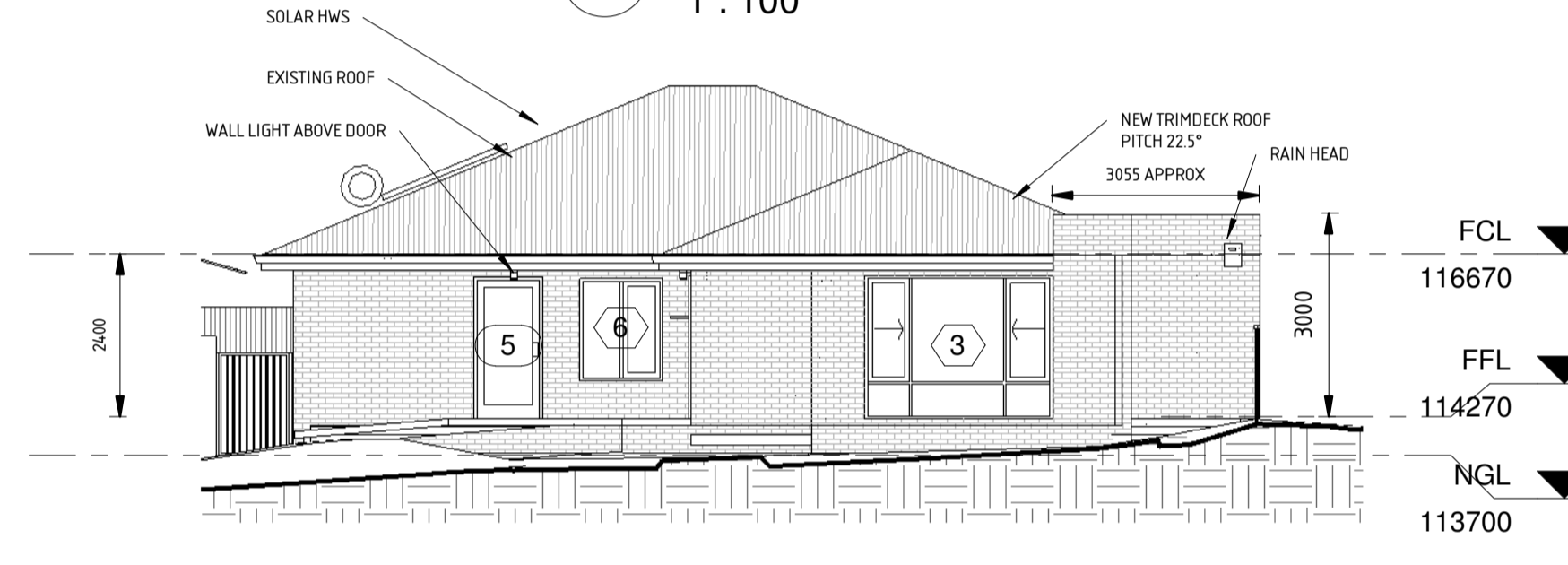
SUSPENDED TIMBER FLOOR IS IN LIEU WAFFLE POOLS PODS AS PER ENGINEERING
VENTS ARE DISTRIBUTED AS UNIFORMLY AS POSSIBLE A MINIMUM 6000m² OF VENTILATION / METRE OF WALL NO VENT WITHIN 3000mm OF THE BOUNDARY EXCEEDS 45000m² REFER TO DRG A01 FOR POSITIVE VENTILATION PLAN
PROVIDE SECURITY CAMERA & SECURITY CARD READER TO ENTRY
PROVIDE SPLIT SYSTEM AIR CONDITIONING TO CHILDREN'S ROOMS, OFFICE & STAFF ROOM



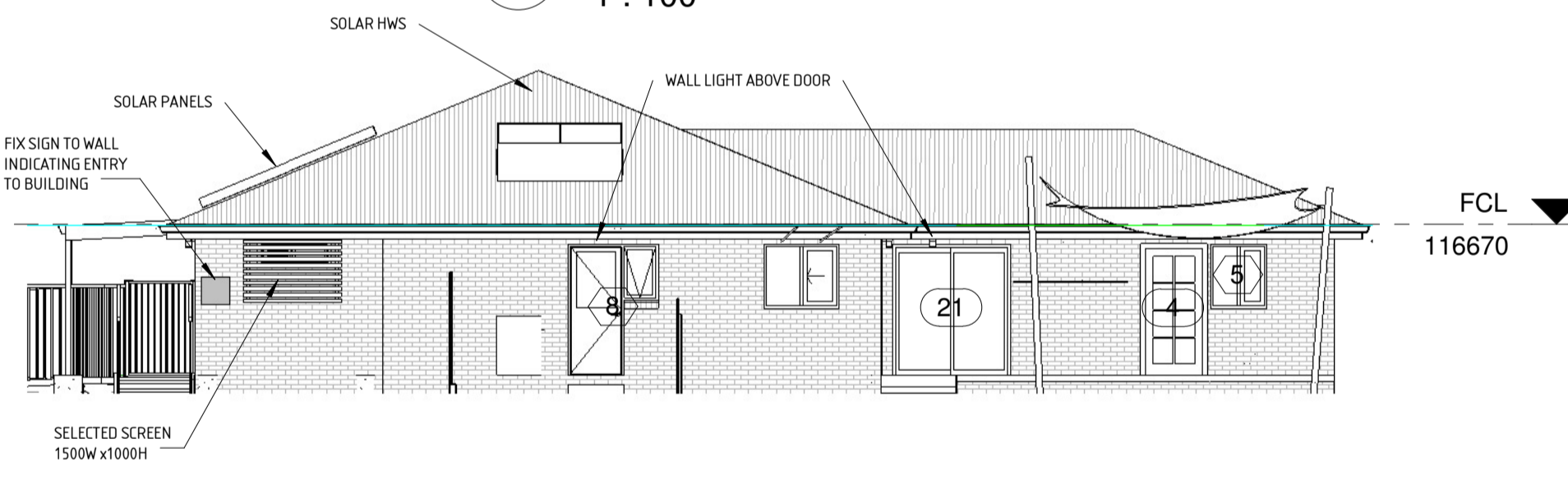
2 Proposed Elevation East
1 : 100



3 Proposed Elevation North
1 : 100



4 Proposed Elevation South
1 : 100



5 Proposed Elevation West
1 : 100

GLAZING ELEMENTS, ORIENTATION, SECTOR, SIZE and PERFORMANCE CHARACTERISTICS	SHADING	CALCULATED OUTCOMES OK (if inputs are valid)
Glazing element	Facing sector	Performance
J ID	Description (optional)	Option A
1	Entry door 1	N
2	Window 1	N
3	Sliding 2	N
4	Door 3	N
5	Window 2	N
6	Window 3	S
7	Window 6	S
8	Door 5	S
9	Window 5	W
10	Door 4	W
11	Door 21 Sliding	W
12	Window 7	W
13	Window 8 Ldry unit	W
14	Window 16	W